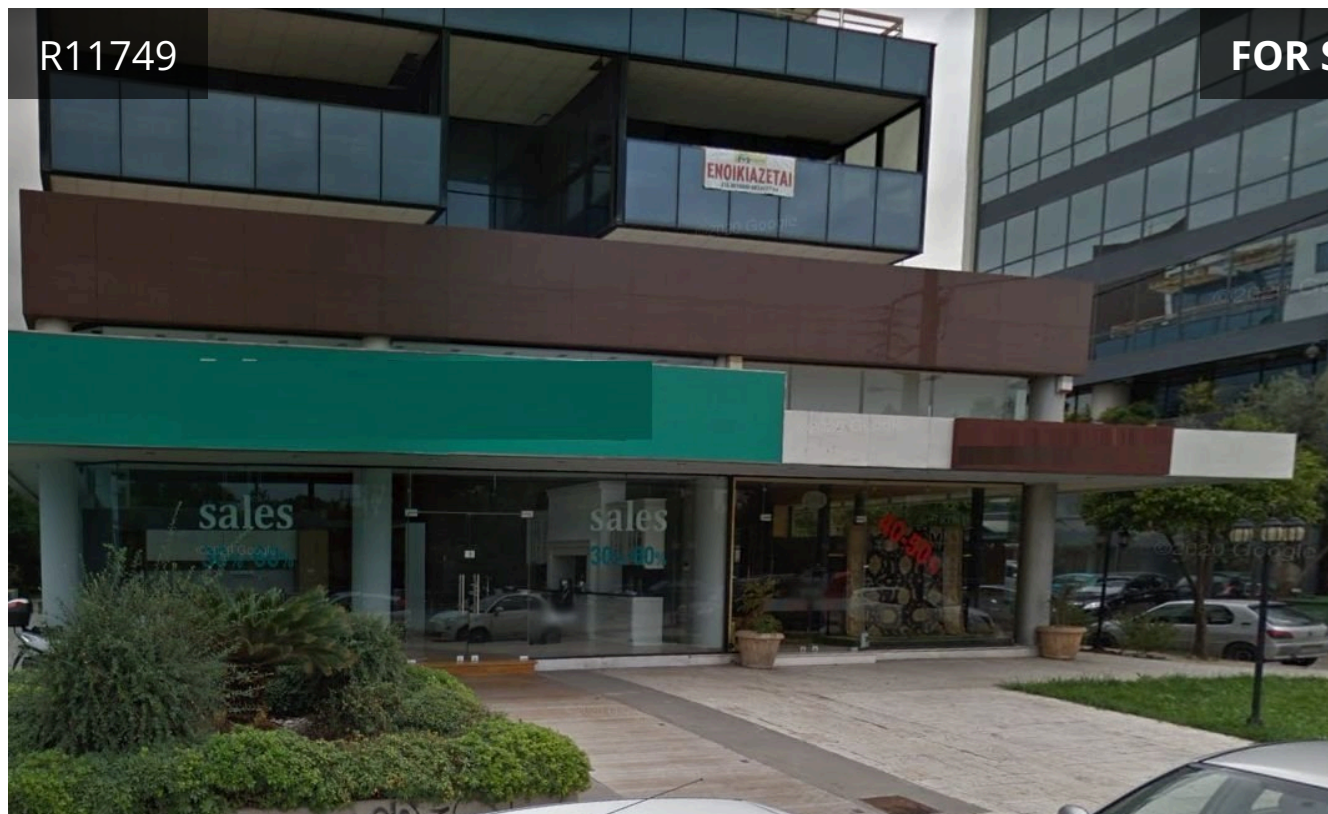


R11749

FOR SALE



Athens - North | Αθήνα - Βόρεια
Προάστια, Halandri | Χαλάνδρι
 260 m² Covered



Description

Corner Office A' floor A-1 of 259,55m² & 16 Parking Spaces in the B' Basement, 12m² each.

The property is located on Kifissias Avenue, which is a central access road of the area, where commercial properties, shops and offices are developed.

It is located within walking distance of the Athens College footbridge.

TYPE	Office
COVERED	260 m ²
STATUS	Resale
ENERGY EFFICIENCY RATING	Certificate expected
YEAR OF CONSTRUCTION	2000